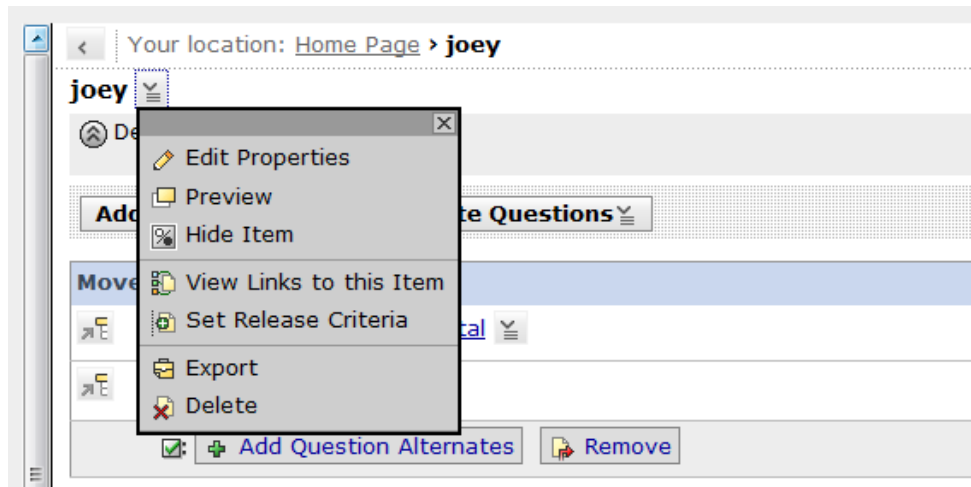
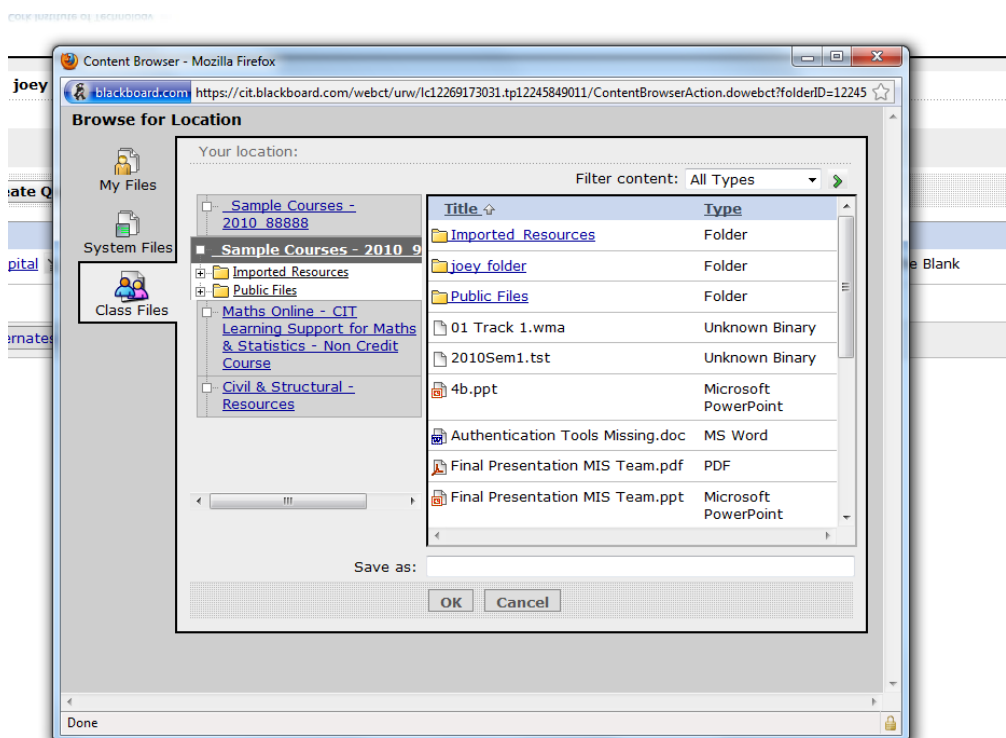


Exporting Assessments from one course to another

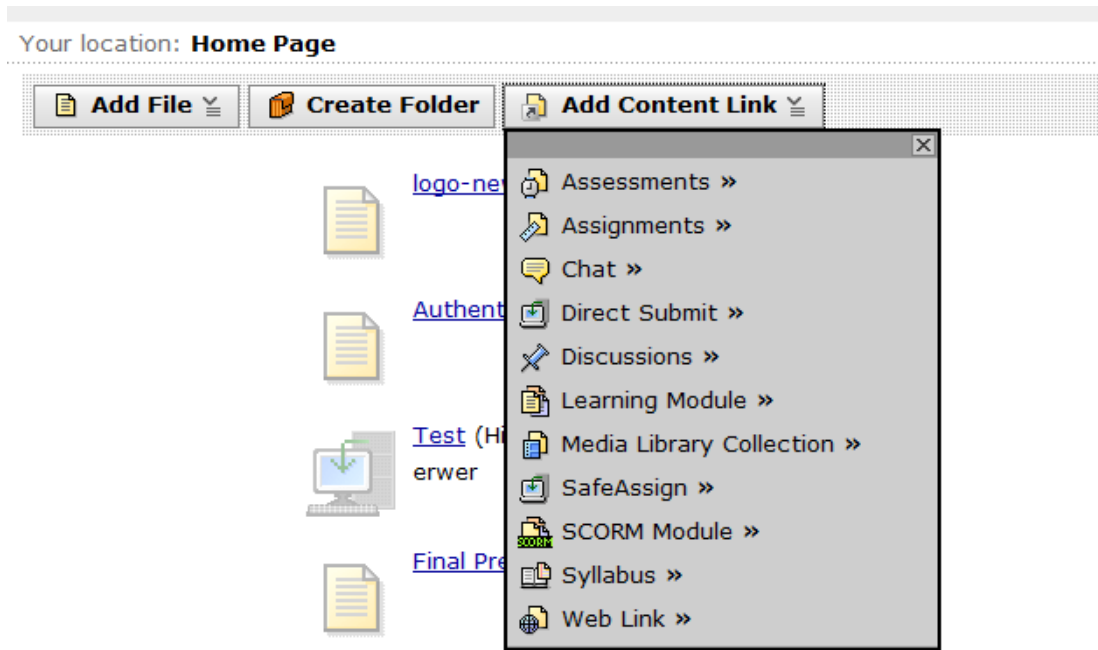
In order to export an assessment from one course to another click on the assessment you wish to export. From the drop down menu select the export option.



Then navigate to the course where you wish to place the assessment. Place in imported resources and give it a name and save



From here go to My Blackboard and select the course where the file was saved. In the build tab click on the add content link and click assessments.



You will then be asked whether you want to set up a new assessment or add a assessment. The assessment you exported will be in the list and you can choose that and click add selected and the assessment will appear.

